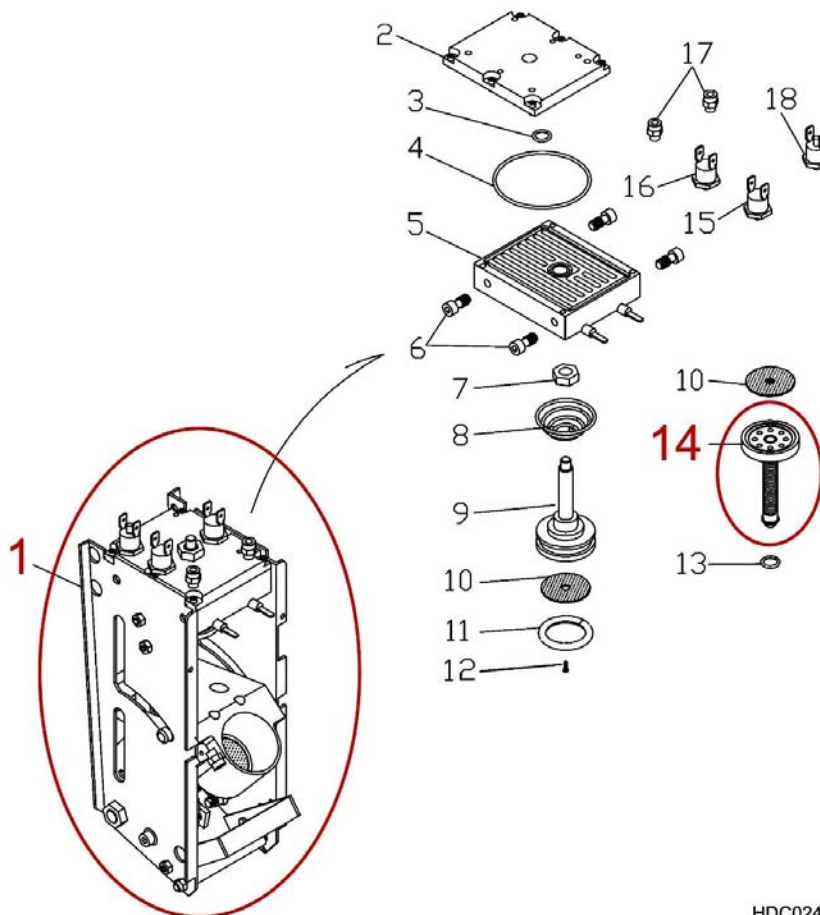


**INCORRECT EXPULSION OF COFFEE POD ON
AEG AND ELECTROLUX COFFEE-MAKERS**

In case of problems of expulsion of the pod on automatic coffee-making machines (see list of models affected), the probable cause of the malfunction is the sticking of the automatic expeller (see pos. 14 in fig. 1). If this should occur, most of the coffee is ducted into the used pod container.

To solve this problem, it is necessary to replace the original plastic expeller with the brass version available as a spare part (code 5028 79 17-00/4). To do so, proceed as described in this Service Bulletin.

The problem may occur in the models listed on the last page of this Service Bulletin, but only in those produced prior to serial number 719..... (week 19/2007).



HDC02462.JPG

Fig. 1

- 1 - AUTOMATIC DISPENSER UNIT
- 14 - EXPULSION MECHANISM

REPLACING THE COFFEE POD EXPELLER

To replace the coffee pod expeller, it is first necessary to remove the automatic dispenser unit (see position 1, fig. 1) as described in Service Manual 599 38 22-83 "Access to Automatic Dispenser Compartment" (page 10).

After removing the automatic dispenser, it is possible to replace the pod expeller (code **5028 79 17-00/4** – see Fig. 3). Proceed as described below.

The automatic pod expeller is supplied with an external spring, an internal spring, a sliding pin and a locknut (see fig. 2)

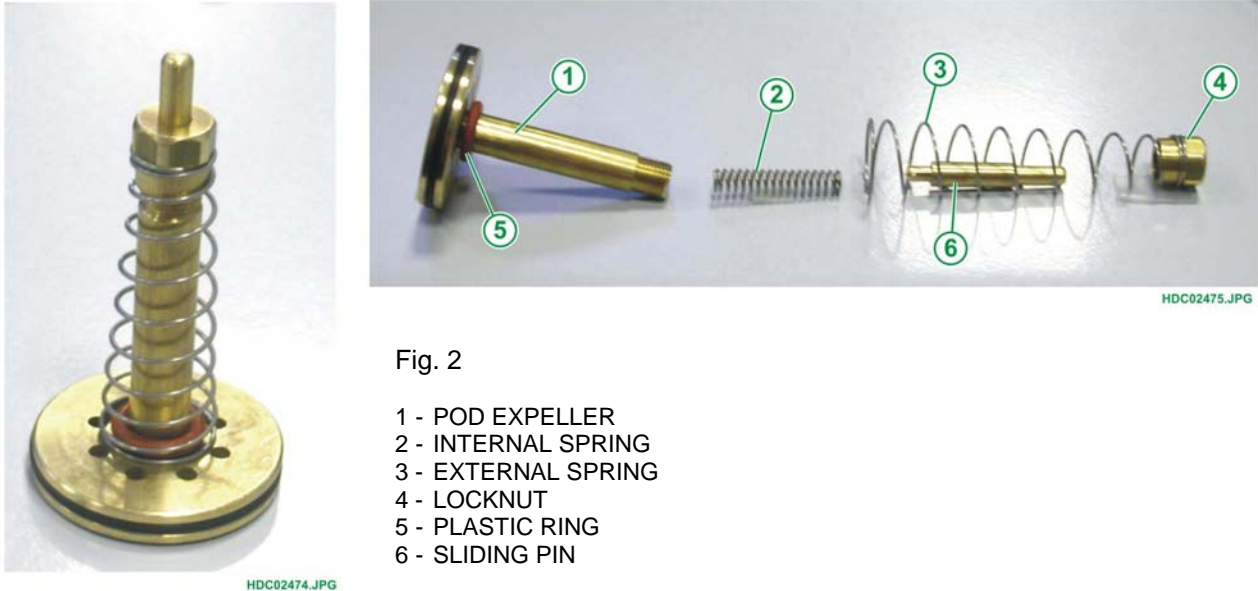


Fig. 2

- 1 - POD EXPELLER
- 2 - INTERNAL SPRING
- 3 - EXTERNAL SPRING
- 4 - LOCKNUT
- 5 - PLASTIC RING
- 6 - SLIDING PIN

Fig. 3 - AUTOMATIC POD EXPELLER – CodE **5028 79 17-00/4**

The following tools are necessary to replace the expeller:

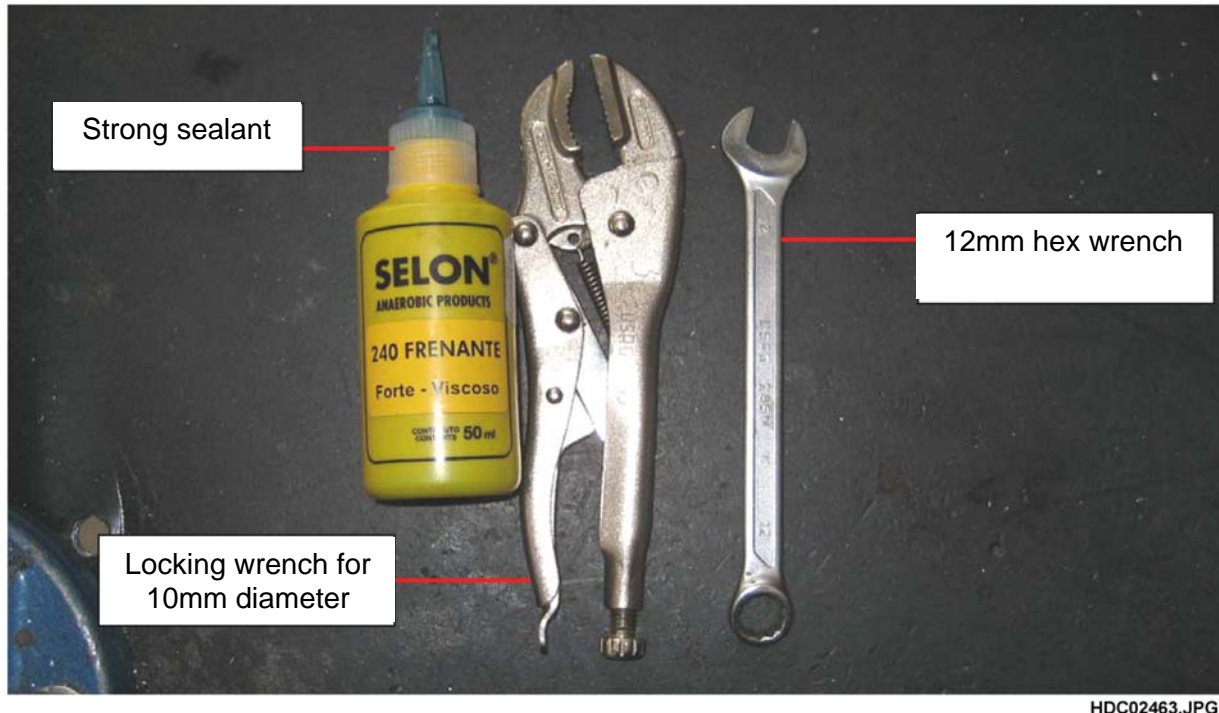
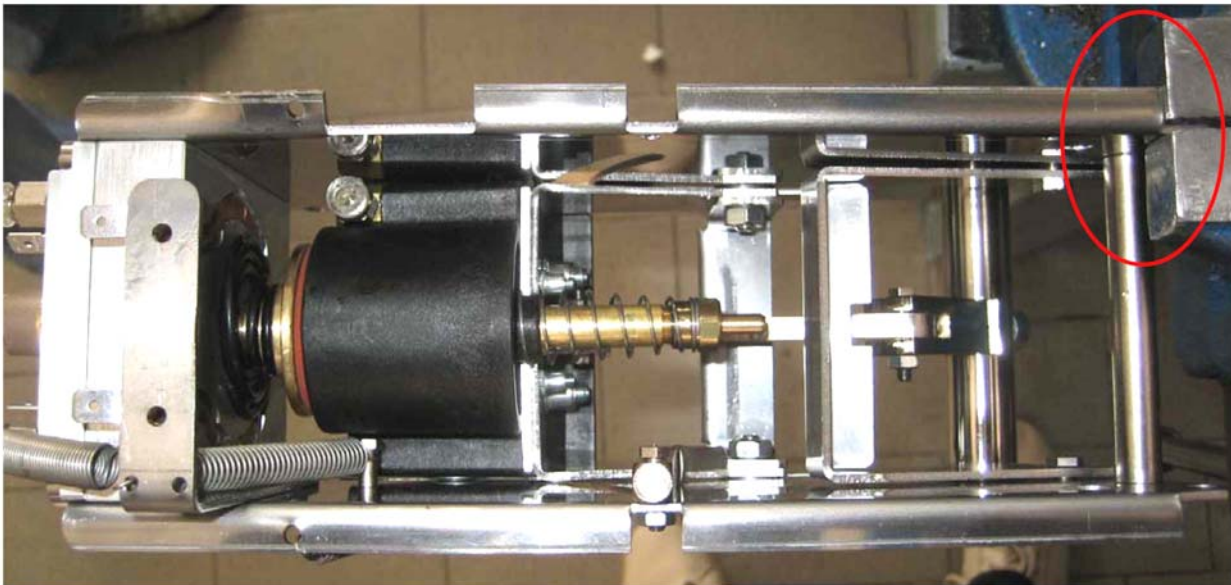


Fig. 4

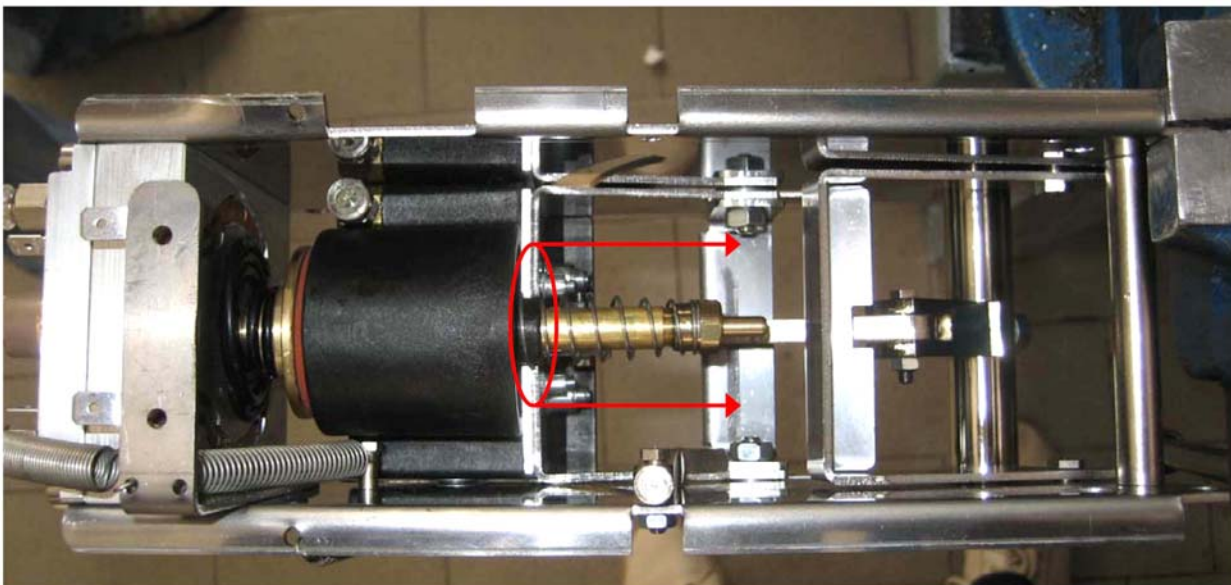
Secure the automatic dispenser unit in a vice (see Fig. 5).



HDC02464.JPG

Fig. 5

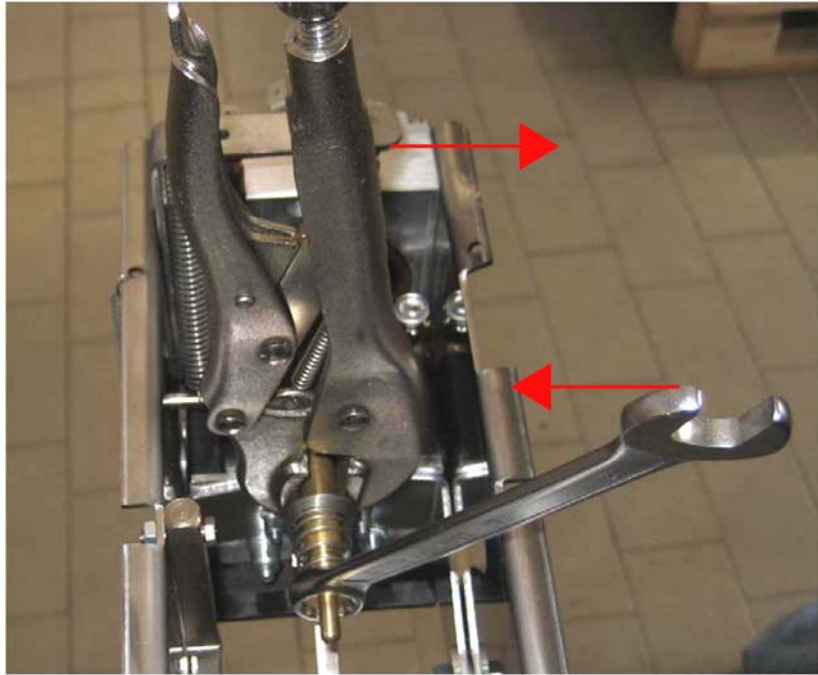
Move the spring downwards to uncover about two centimetres of the cylindrical brass stem (see Fig. 6).



HDC02465.JPG

Fig. 6

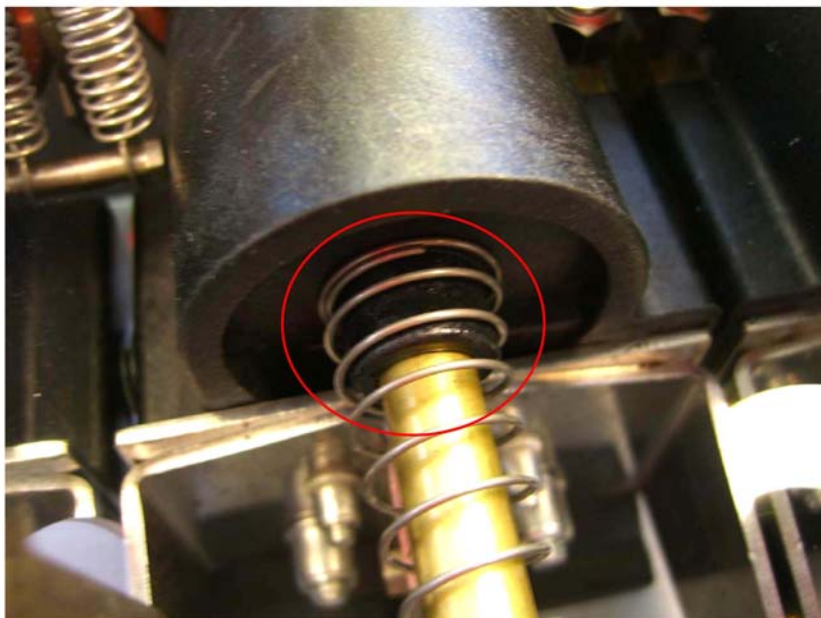
Lock the cylindrical stem in position using the locking wrench and use the 13 mm hex wrench to loosen the locknut (see Fig. 7).



HDC02466.JPG

Fig. 7

At this point, the old expeller can be removed and replaced. Fit the external spring, ensuring that it is correctly positioned on the plastic ring (see Fig. 8).



HDC02467.JPG

Fig. 8

Insert the internal spring into the brass cylinder (see Fig. 9).



Fig. 9

HDC02468.JPG

Introduce the sliding pin in the position shown in Fig. 10.

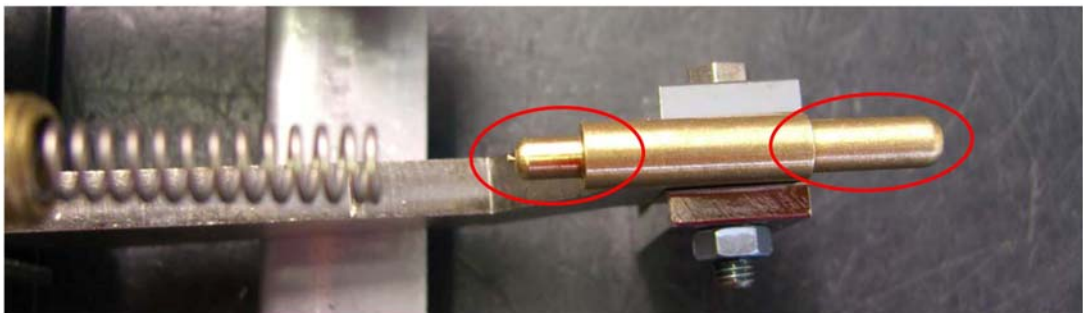


Fig. 10

HDC02469.JPG

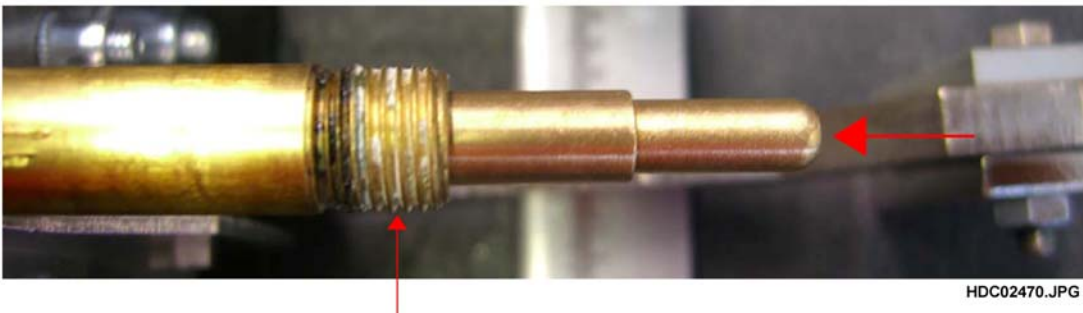


Fig. 11

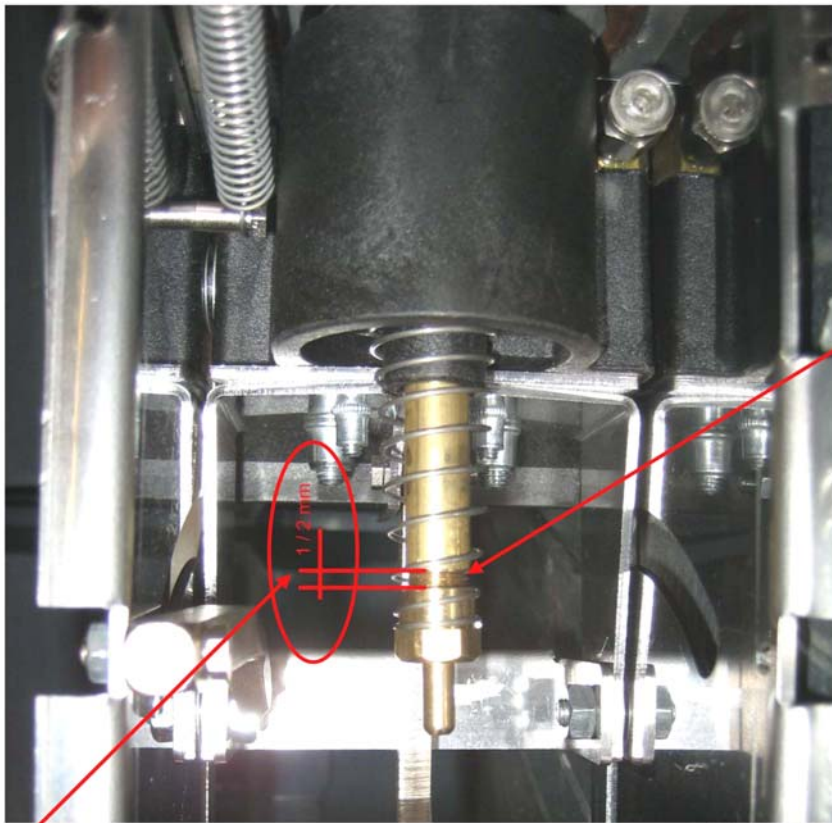
HDC02470.JPG

Place a few drops of sealant on the threaded section and begin to screw the nut into position. Do not tighten the nut completely, but leave about two millimetres of thread uncovered.



Fig. 12

HDC02471.JPG



Add a few drops of sealant before tightening

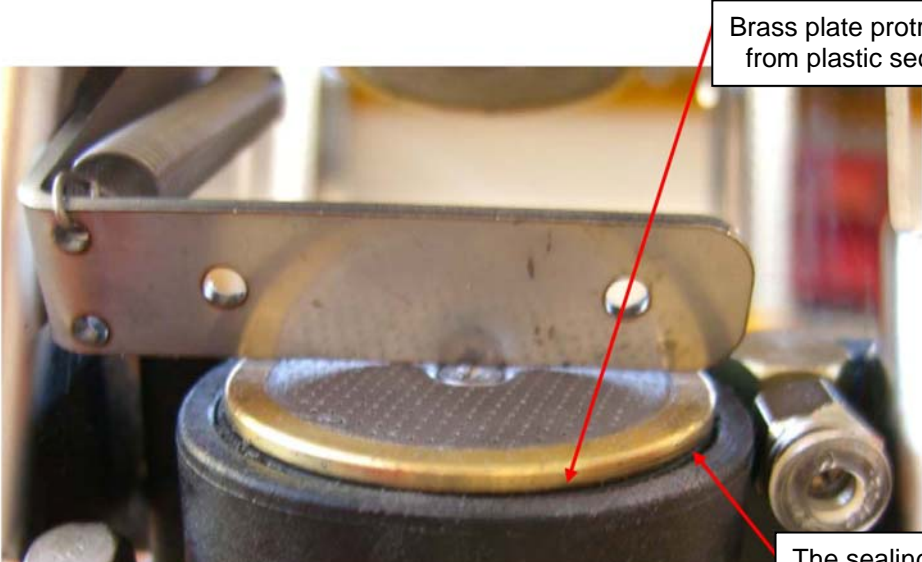
HDC02472.JPG

Fig. 13

Ensure that about two millimetres of thread remain uncovered. The nut is used to adjust the height of the pod expeller.

After replacing the expeller, check the movement of the expeller by moving it manually and adjust the height if necessary. Unscrew the nut to raise the expeller, tighten the nut to lower it.

The correct position of the pod expeller is shown in the figure below. The brass section must protrude slightly from the plastic part, but the sealing ring must remain inside the plastic seat.



Brass plate protruding from plastic section

The sealing ring must remain inside the plastic seat

HDC02473.JPG

Fig. 14

The models affected are listed below:

PNC	MODEL	BRAND	COUNTRY
947727048	PE9038-M	AEG-ELECTROLUX	NL ES
947727049	PE9038-A	AEG-ELECTROLUX	NL
947727050	PE9038-M	AEG-ELECTROLUX	UK
947727051	PE9038-A	AEG-ELECTROLUX	IE UK
947727063	PE9038-M	AEG-ELECTROLUX	BE HR CZ DK EE FI HU KZ NL NO PL LV LT NO RU SK SI ES SE UA
947727064	PE9038-A	AEG-ELECTROLUX	BE CZ DK NL NO SE
947727065	PE9038-M	AEG-ELECTROLUX	UK
947727066	PE9038-A	AEG-ELECTROLUX	IE UK
947727085	EBA60000X	ELECTROLUX	BE HR CZ DK EE FR HU KZ LV LT LU NL NO PL PT RO SK SI ES SE TR UA
947727086	EBA60002X	ELECTROLUX	IE UK
947727090	PE9038-M	AEG-ELECTROLUX	BE HR CZ DK EE FI DE HU IT NL NO PL RU SK SI SE
947727091	PE9038-A	AEG-ELECTROLUX	BE CZ DK DE NL NO SE
947727092	PE9038-M	AEG-ELECTROLUX	IE UK
947727094	PE9038-A	AEG-ELECTROLUX	UK