

Service
Service
Service



Philips Domestic Appliances and Personal Care

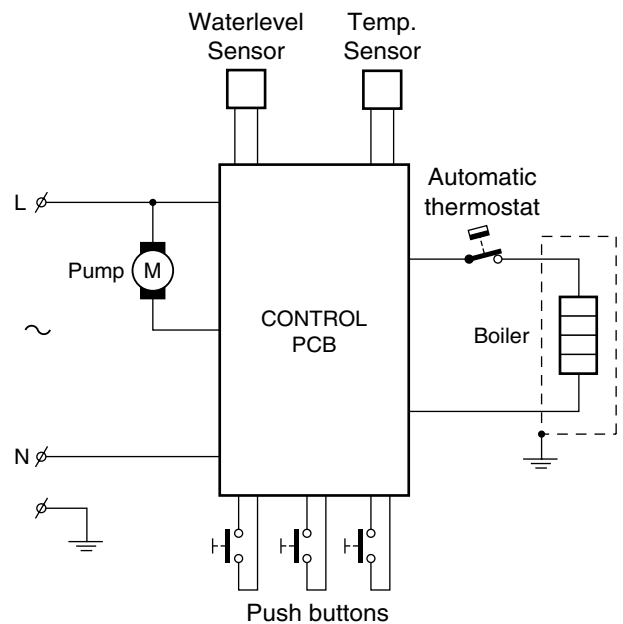
Service Manual

PRODUCT INFORMATION

- This product meets the requirements regarding interference suppression on radio and TV.
- After the product has been repaired, it should function properly and has to meet the safety requirements as officially laid down at this moment.

TECHNICAL INFORMATION

- Voltage : 220 - 230 V
- Frequency : 50 Hz
- Power consumption : 1450 W
- Standby power consumption : 0.002 kWh
- Contents reservoir : 753 cc
- Colour setting : Black/Aluminium
- Sap coding : HD7840



DISASSEMBLY- AND RE-ASSEMBLY ADVISE

Disassembly information

To remove the back cover (item 12 exploded view) handle as follows:

- Remove valve outlet.
- Unscrew the 4 Torx screws.

Now remove gently the back cover.

- Reassemble follow steps backwards.

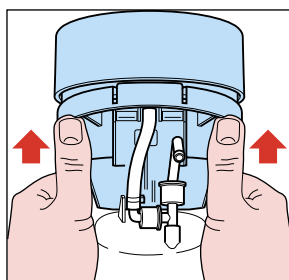
Removing 3-way valve (item 19 exploded view) handle as follows:

- Remove back cover.
- Unsnap boiler out of brew chamber.
- Rotate the 3-way valve a quarter (90°) counter clockwise.
- Gently pull the 3-way valve out of the boiler.
- Reassemble follow the above steps backwards.

Removing Brew chamber head (item 1 exploded view) handle as follows:

- Remove back cover.
- Place the appliance such a way that you are looking at the boiler.
- First remove the boiler from the snap lock position of the brew chamber. To do so use a screwdriver and bend slightly the both ribs to the outer side and pull the boiler out of the fixation point.

- Now remove 3-way valve.
To remove the brew chamber unlock snap lock at the front of the brew chamber. Use your both thumbs (see picture 1) and push strongly upwards with a little distortion (rotation) until the brew chamber comes loose.



picture 1

- Reassemble follow above steps backwards.

To reach the components like PCB and Pump placed on the base handle as follows:

- First remove back cover, brew chamber and 3-way valve.
- Remove the 4 Torx T15 screws (A) (see exploded view)
- Remove the metal housing (Item 13 in combination with plastic housing part) by pulling gently upwards.
- Unsnap at the base side the 4 snap locks with a screwdriver and the metal housing (Item 14 in combination with plastic housing part) can be removed from the base.

The necessary parts can now be reached.

IMPORTANT NOTE!

When the **PCB** or **Pump** has to be replaced, please follow careful the instruction - **adjusting the Coffee volume output**, see chapter **REPAIR INSTRUCTION**

- To reassemble follow above steps backwards.

REPAIR INSTRUCTION

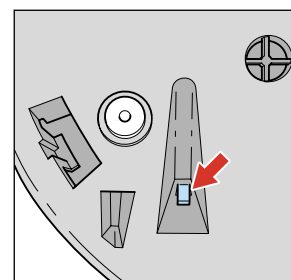
Adjusting the Coffee Volume output.

When for some reason the pump or PCB had to be replaced, please be aware for the following adjustments to perform. At the factory all appliances are 100% adjusted to get the right volume output.

If one of the components (PCB or PUMP) has been exchanged, the appliance has to be adjusted again before returned to the end user.

Necessary process steps to adjust the volume:

1. To get access to the potentiometer that makes it possible to adjust the volume output, remove with a pair of tweezers the plastic lip under the base. (See picture 2 for location)




picture 2

2. Be sure the boiler is filled properly, other wise perform fill procedure see DFU for instructions.
3. Switch appliance on and wait until the unit is ready to brew.
4. Be sure a **podholder** is placed, but **without** a Coffee POD. (only adjusting with **plain water**)
5. Place a cup on the drip tray cover and push the one-cup button.
6. Now the unit is stabilized.
7. Empty the cup and push again for one cup setting, measure the volume output with a graduated beaker. In the table you can find the requirements for the minimum/maximum volume output cc/mL values depending from the country version:

One cup setting, Including Podholder, water spec. (without Coffee pod)		
	Min. water cc/mL	Max. water cc/mL
France version	104	120
General version	127	143

* Each time the potentiometer has been adjusted, make twice a one cup setting and measure the volume of the last setting, this to stabilize the unit.

8. With a small screwdriver the potentiometer can be adjusted (if you look at the front of the appliance, lower volume adjust screwdriver counter clockwise, higher volume adjust screwdriver clockwise)
9. Repeat step 7 to 8 until the measured volume is between the allowed minimum/maximum tolerances stated in the table.
10. End.

 = changed

Descaling

Regular descaling will prolong the life of your appliance and will guarantee optimal brewing results for a long time.

- Follow the steps in the section headed “Preparing the appliance for use” see DFU (Direction For Use manual).
- In stead of only water use a mix of water and Lemon sour.
- For the best result leave the mix of water and Lemon sour for about 30 minutes in the appliance, before you start with flushing the appliance.
- To get the best results repeat above mentioned step once or twice.
- When finished, flush the appliance twice by repeating the above mentioned steps only use water instead.

OPTIONAL (ACCESSORIES)

- No specific issues

PARTS LIST


Pos	Service code	Description	
1	4222 259 34470	Brewchamber assy complete	
2	4222 247 06810	Brewchamber radial seal	
3	4222 259 06890	Distributor assy	
4*	4222 259 34720	Pad holder single	
5*	4222 259 34770	Pad holder double	
6	4222 247 38480	Foam chamber cover	Black
7*	4222 247 39570	Foam chamber	
8	4222 259 21860	Drip tray cover	
9	4222 247 38360	Drip tray	
10	4222 259 21770	Water tank assy	Transperancy blue
11	4222 247 38460	Valve outlet	Black
12	4222 247 38450	Back cover	Black
13	4222 259 21550	Metal housing	
14	4222 259 21540	Metal front cover printed	
15	4222 247 06860	O-ring (elbo)	
16	4222 247 35880	Pump Elbo	
17	4222 247 06840	Hose 0.25 meter	
18	4222 259 22110	PCB assy EXCEL	
19	4222 259 22010	Valve (3way)	
20	4222 259 24480	Boiler assy compl.	230 V / 1400 W
21	4222 259 11160	Temp. sensor	
22	4222 246 16300	Water level sensor	
23	4222 247 35870	Filter	
24	4222 247 06820	Water socket	
25	4222 259 03590	Pump ULKA ER-EP8R 1.4 bar	230 V
26	4213 247 05250	Foot	
27	4222 259 28110	Service podholder kit assy	

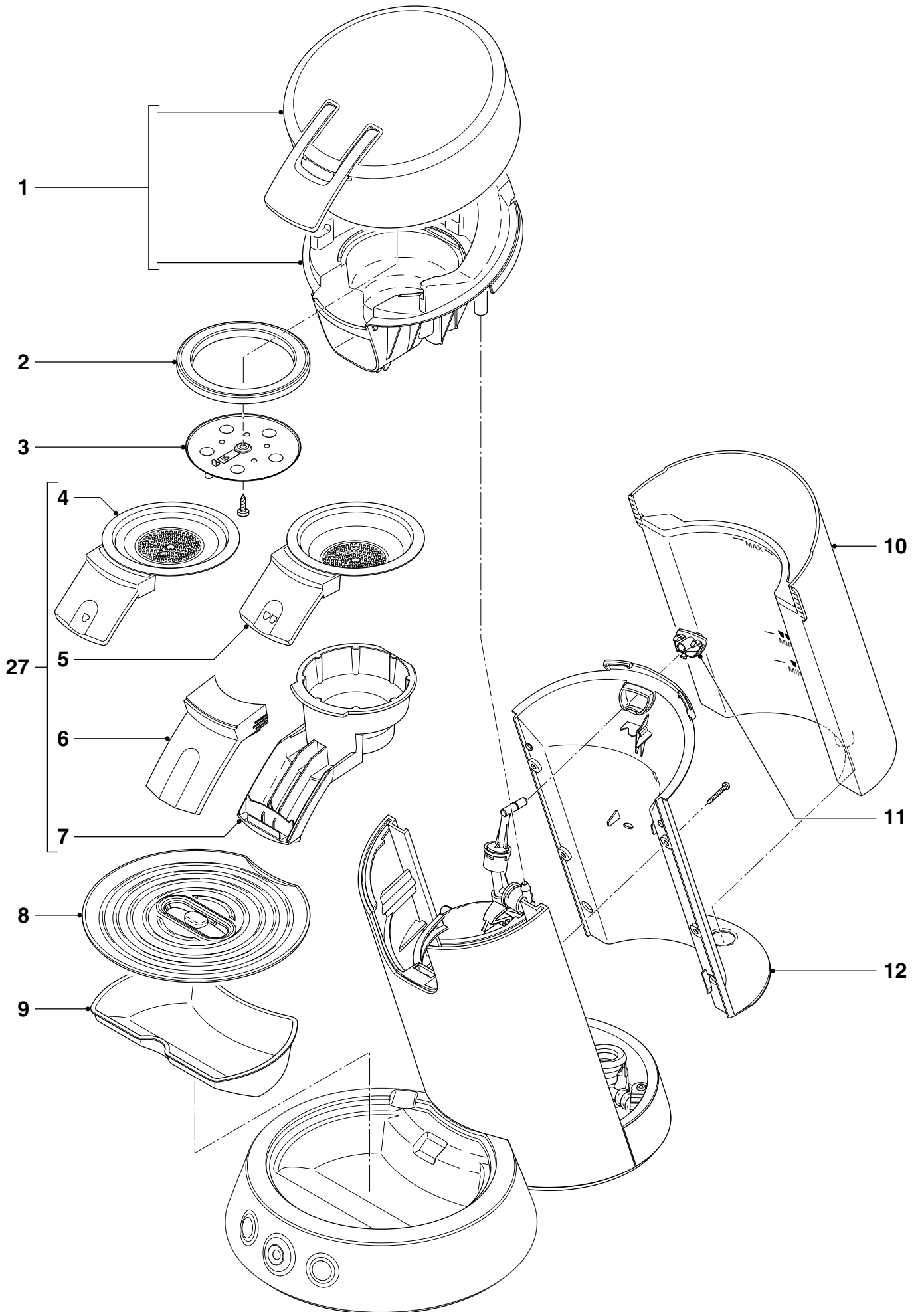
* Remark:

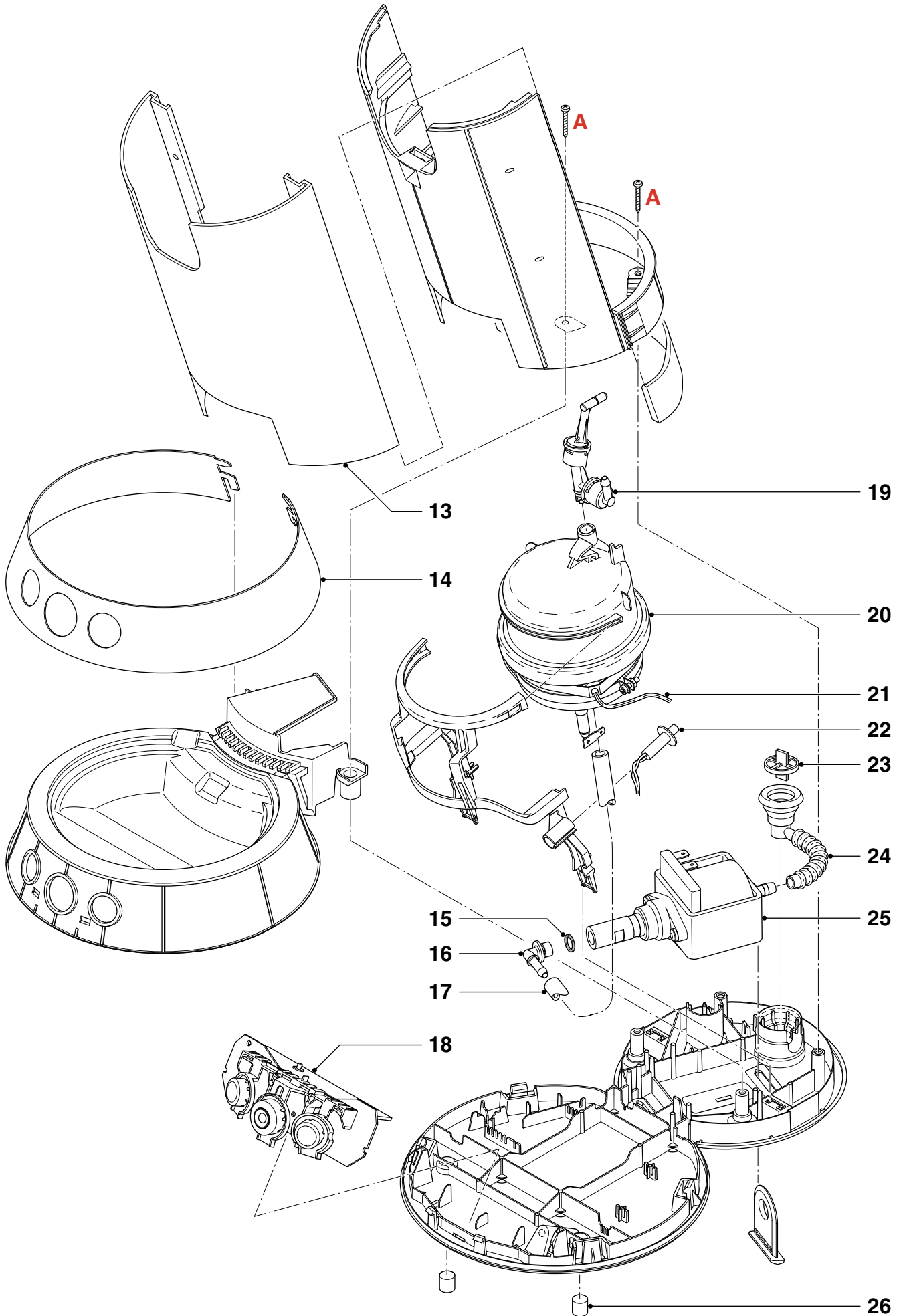
New parts may not be used in combination with old parts, otherwise the Coffee foam layer will be very **bad!**

Throw the old materials away, so no chance exist for mixing up old and new parts, see also order no **Service podholder kit assy** for new parts!

To determine “old” and “new” parts please check the latest 2 pages of the service manual for details.

 = changed



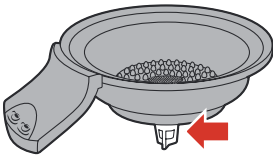
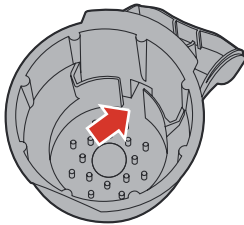


NEDERLANDS

Geachte klant,

Hierbij ontvangt u uw Senseo koffiezetapparaat retour, met onze excuses voor het ongemak. Onze reparatiedienst garandeert u een weer 100% goed werkend product.

Tevens laten we u weten dat we uw Senseo hebben voorzien van een nieuw koffieuitstroomgedeelte en 2 nieuwe padhouders (1- en 2-kops padhouder).

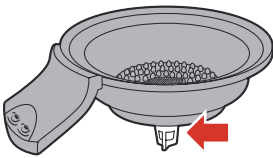
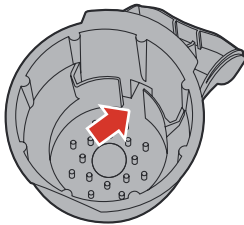
Nieuwe onderdelen	Belangrijk
<div style="display: flex; justify-content: space-around;"> <div style="text-align: center;">  <p>1 Nieuwe uitloop</p> <p>Figuur 1</p> </div> <div style="text-align: center;">  <p>2 Grotere opening</p> <p>Figuur 2</p> </div> </div>	<p>Gebruik de nieuwe onderdelen (padhouder(s) en koffieuitstroomgedeelte) nooit in combinatie met de oude padhouder(s) en/of het oude koffieuitstroomgedeelte.</p> <p>Het door elkaar gebruiken van oude en nieuwe onderdelen heeft een negatief resultaat op het crema-laagje, daarom adviseren wij u de oude onderdelen weg te gooien.</p> <p>U kunt de nieuwe onderdelen als volgt herkennen (zie figuur 1 en 2 in het linker kader).</p>

ENGLISH

Dear customer,

We are happy to return your repaired Senseo coffee machine and apologise for the inconvenience caused. Our repair service guarantees a perfectly working machine.

Your Senseo machine has been provided with a new coffee outflow unit and 2 new pod holders (a 1-cup pod holder and a 2-cup pod holder).

New parts	Important
<div style="display: flex; justify-content: space-around;"> <div style="text-align: center;">  <p>1 New outflow hole</p> <p>Figure 1</p> </div> <div style="text-align: center;">  <p>2 Larger opening</p> <p>Figure 2</p> </div> </div>	<p>Never use the new parts (pod holders and coffee outflow unit) together with the old pod holders and/or coffee outflow unit.</p> <p>If you mix old and new parts, this will have a negative effect on the crema layer. That's why we advise you to dispose of the old parts.</p> <p>You can recognise the new parts by looking at figures 1 and 2 shown on the left.</p>

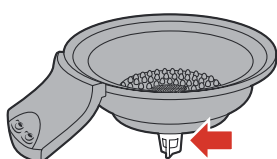
FRANÇAIS

Cher consommateur,

Nous sommes heureux de vous rendre votre cafetière Senseo et nous nous excusons pour tout inconvénient occasionné.

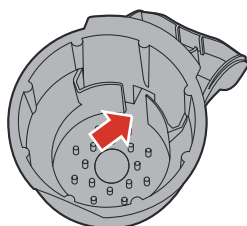
Notre service réparations garantit le bon fonctionnement de l'appareil. Votre cafetière Senseo a été fournie avec une nouvelle unité d'écoulement du café et 2 nouveaux supports à dosettes (support à dosettes pour 1 et 2 tasses).

Nouveaux composants



1 Nouveau orifice d'écoulement

Figure 1



2 Orifice plus large

Figure 2

Important

N'utilisez jamais les nouveaux composants (supports à dosettes et unité d'écoulement de café) avec les supports à dosettes et/ou l'unité d'écoulement de café usagé(es).

Si vous intervertissez les nouveaux composants avec les vieux composants, cela affectera négativement la couche de mousse.

Nous vous conseillons de jeter les vieux composants.

Les nouveaux composants sont présentés dans les figures 1 et 2 à gauche.

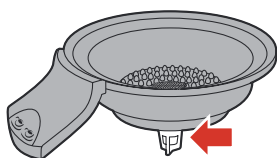
DEUTSCH

Liebe Kundin, lieber Kunde,

Anbei erhalten Sie Ihre reparierte Senseo Kaffeemaschine. Wir möchten unser Bedauern für die Ihnen entstandenen Unannehmlichkeiten ausdrücken. Unsere Reparatur-Abteilung garantiert Ihnen eine perfekt funktionierende Kaffeemaschine.

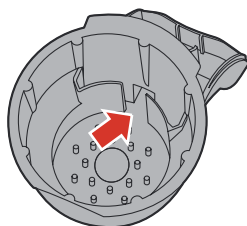
Ihre Senseo Kaffeemaschine ist mit einem neuen Kaffeeauslauf ausgestattet worden sowie mit zwei neuen Padhaltern (ein Padhalter für 1 Tasse und ein für 2 Tassen).

Neuen teile



1 Neue Auslauf Öffnung

Abbildung 1



2 Größere Öffnung

Abbildung 2

Wichtig

Benutzen Sie die neuen Teile (Padhalter und Kaffeeauslauf) niemals mit den alten Padhaltern bzw. der alten Auslaufeinheit.

Wenn Sie die alten Teile mit den neuen kombinierten, wird die Qualität der Schaumkrone stark beeinträchtigt. Deshalb empfehlen wir Ihnen, die alten Teile zu entsorgen.

Auf den Abbildungen 1 und 2 (links) können Sie die neuen Teile erkennen.