

INSTALLATION & OPERATING GUIDE

INTRODUCTION

This portable warmer stove keeps one or two decanters of coffee at the perfect serving temperature.

USER NOTICES

The notices on this warmer should be kept in good condition. Replace unreadable or damaged labels.



00986.0000

CAUTION HOT

00789.0000



00824.0002

ELECTRICAL REQUIREMENTS

Models WX1 & WX2 have attached cordsets and requires 2-wire grounded service rated 120 volts ac, single phase. Model WX1 has 100 watts total. Model WX2 has 200 watts total.

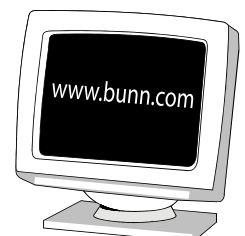
Models WX1A & WX2A require 2-wire grounded service rated 220-240 volts ac, single phase. Model WX1A has 100 watts total. Model WX2A has 200 watts total. It is equipped with an I.E.C. 320 connector for attachment of a customer-supplied cordset.

BUNN-O-MATIC CORPORATION

POST OFFICE BOX 3227

SPRINGFIELD, ILLINOIS 62708-3227

PHONE: (217) 529-6601 FAX: (217) 529-6644



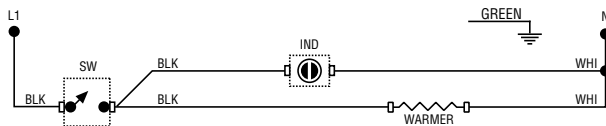
CLEANING

The use of a damp cloth rinsed in any mild, non-abrasive, liquid detergent is recommended for cleaning all surfaces on Bunn-O-Matic equipment.

REPLACEMENT PARTS

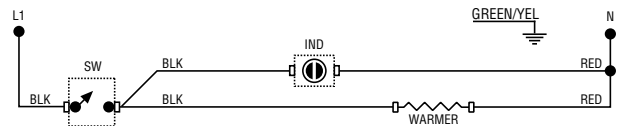
- 01908.0000.....Connector, Power Entry (WX1A & WX2A models)
- 40701.0001.....Cordset Assy (WX1 models)
- 40701.0006.....Cordset Assy (WX2 models)
- 04198.0000.....Feet (Set of 4) (WX1, WX1A and WX2 models)
- 24600.0000.....Feet (Set of 4) (WX2A models)
- 04226.0002.....Indicator Lamp, 125V (WX1 and WX2 models) (Use in .687" x 1.22" panel cut-out)
- 01089.0000.....Indicator Lamp, 240V (WX1A & WX2A models prior to July 1997) (Use in .687" x 1.22" panel cut-out)
- 27691.0000.....Indicator Lamp, 250V (WX1A & WX2A models effective July 1997) (Use in .55" x 1.12" panel cut-out)
- 04225.0002.....On/Off Switch (WX1 and WX2 models) (WX1A & WX2A models prior to July 1997) (Use in .687" x 1.22" panel cut-out)
- 27689.0000.....On/Off Switch (WX1A & WX2A models effective July 1997) (Use in .55" x 1.12" panel cut-out)
- 03656.0000.....Warmer Dish, Porcelain
- 01227.0000.....Warmer Element (WX1 and WX2 models)
- 01951.0000.....Warmer Element (WX1A & WX2A models)
- 05212.0000.....Warmer Retainer Plate
- 23325.0000.....Wiring Kit, Complete (WX1 models)
- 23326.0000.....Wiring Kit, Complete (WX2 models)
- 23327.0000.....Wiring Kit, Complete (WX1A models)
- 23328.0000.....Wiring Kit, Complete (WX2A models)
- 00707.0000.....Bushing, Strain Relief (WX1 and WX2 models)

SCHEMATIC WIRING DIAGRAM WX1



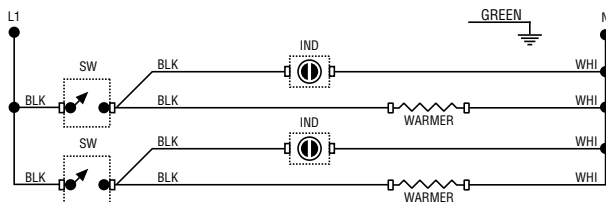
**100 to 120 VOLTS AC
2 WIRE + GND**

SCHEMATIC WIRING DIAGRAM WX1A



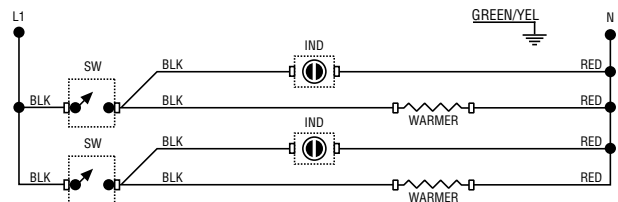
**230 VOLTS AC
2 WIRE + GND**

SCHEMATIC WIRING DIAGRAM WX2



**100 to 120 VOLTS AC
2 WIRE + GND**

SCHEMATIC WIRING DIAGRAM WX2A



**230 VOLTS AC
2 WIRE + GND**

BUNN-O-MATIC COMMERCIAL PRODUCT WARRANTY

Bunn-O-Matic Corp. ("BUNN") warrants equipment manufactured by it as follows:

- 1) Airpots, thermal carafes, decanters, GPR servers, iced tea/coffee dispensers, MCP/MCA pod brewers thermal servers and ThermoFresh servers (mechanical and digital)- 1 year parts and 1 year labor.
- 2) All other equipment - 2 years parts and 1 year labor plus added warranties as specified below:
 - a) Electronic circuit and/or control boards - parts and labor for 3 years.
 - b) Compressors on refrigeration equipment - 5 years parts and 1 year labor.
 - c) Grinding burrs on coffee grinding equipment to grind coffee to meet original factory screen sieve analysis - parts and labor for 4 years or 40,000 pounds of coffee, whichever comes first.

These warranty periods run from the date of installation BUNN warrants that the equipment manufactured by it will be commercially free of defects in material and workmanship existing at the time of manufacture and appearing within the applicable warranty period. This warranty does not apply to any equipment, component or part that was not manufactured by BUNN or that, in BUNN's judgment, has been affected by misuse, neglect, alteration, improper installation or operation, improper maintenance or repair, non periodic cleaning and descaling, equipment failures related to poor water quality, damage or casualty. In addition, the warranty does not apply to replacement of items subject to normal use including but not limited to user replaceable parts such as seals and gaskets. This warranty is conditioned on the Buyer 1) giving BUNN prompt notice of any claim to be made under this warranty by telephone at (217) 529-6601 or by writing to Post Office Box 3227, Springfield, Illinois 62708-3227; 2) if requested by BUNN, shipping the defective equipment prepaid to an authorized BUNN service location; and 3) receiving prior authorization from BUNN that the defective equipment is under warranty.

THE FOREGOING WARRANTY IS EXCLUSIVE AND IS IN LIEU OF ANY OTHER WARRANTY, WRITTEN OR ORAL, EXPRESS OR IMPLIED, INCLUDING, BUT NOT LIMITED TO, ANY IMPLIED WARRANTY OF EITHER MERCHANTABILITY OR FITNESS FOR A PARTICULAR PURPOSE. The agents, dealers or employees of BUNN are not authorized to make modifications to this warranty or to make additional warranties that are binding on BUNN. Accordingly, statements by such individuals, whether oral or written, do not constitute warranties and should not be relied upon.

If BUNN determines in its sole discretion that the equipment does not conform to the warranty, BUNN, at its exclusive option while the equipment is under warranty, shall either 1) provide at no charge replacement parts and/or labor (during the applicable parts and labor warranty periods specified above) to repair the defective components, provided that this repair is done by a BUNN Authorized Service Representative; or 2) shall replace the equipment or refund the purchase price for the equipment.

THE BUYER'S REMEDY AGAINST BUNN FOR THE BREACH OF ANY OBLIGATION ARISING OUT OF THE SALE OF THIS EQUIPMENT, WHETHER DERIVED FROM WARRANTY OR OTHERWISE, SHALL BE LIMITED, AT BUNN'S SOLE OPTION AS SPECIFIED HEREIN, TO REPAIR, REPLACEMENT OR REFUND.

In no event shall BUNN be liable for any other damage or loss, including, but not limited to, lost profits, lost sales, loss of use of equipment, claims of Buyer's customers, cost of capital, cost of down time, cost of substitute equipment, facilities or services, or any other special, incidental or consequential damages.

392, AutoPOD, AXIOM, BrewLOGIC, BrewMETER, Brew Better Not Bitter, BrewWISE, BrewWIZARD, BUNN Espresso, BUNN Family Gourmet, BUNN Gourmet, BUNN Pour-O-Matic, BUNN, BUNN with the stylized red line, BUNNlink, Bunn-OMatic, Bunn-O-Matic, BUNNserve, BUNNSERVE with the stylized wrench design, Cool Froth, DBC, Dr. Brew stylized Dr. design, Dual, Easy Pour, EasyClear, EasyGard, FlavorGard, Gourmet Ice, Gourmet Juice, High Intensity, iMIX, Infusion Series, Intellisteam, My Café, Phase Brew, PowerLogic, Quality Beverage Equipment Worldwide, Respect Earth, Respect Earth with the stylized leaf and coffee cherry design, Safety-Fresh, savemycoffee.com, Scale-Pro, Silver Series, Single, Smart Funnel, Smart Hopper, SmartWAVE, Soft Heat, SplashGard, The Mark of Quality in Beverage Equipment Worldwide, ThermoFresh, Titan, trifecta, Velocity Brew, A Partner You Can Count On, Air Brew, Air Infusion, Beverage Bar Creator, Beverage Profit Calculator, Brew better, not bitter., BUNNSource, Coffee At Its Best, Cyclonic Heating System, Daypart, Digital Brewer Control, Nothing Brews Like a BUNN, Pouring Profits, Signature Series, Tea At Its Best, The Horizontal Red Line, Ultra are either trademarks or registered trademarks of Bunn-O-Matic Corporation.