

FIND OUT MORE  
ON THE WEB.  
WILBURCURTIS.COM



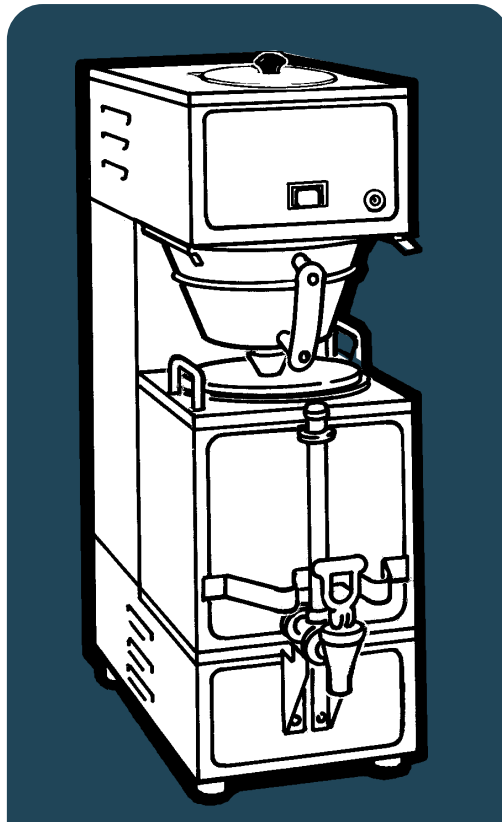
# WILBUR CURTIS COMPANY, Inc.

## GEM 120P

### POUR-OVER SATELLITE COFFEE BREWER

#### TABLE OF CONTENTS

Rough-in Dwg . . . Inside Cvr.	
Start-up . . . . .	1
Brewing Coffee . . . . .	1
Decaf & Hi-yield Brewing .	1
Care & Maintenance . . . .	2
Trouble Shooting . . . . .	3
Wiring Diagram . . . . .	4
Illustrated Parts List . . .	5 - 8
Warranty . . . . .	Back Cover



#### CARTON CONTENTS

Qty	Item
1	Brewer, Gemini 120P
1	Satellite, Gem-3 w/Lid
1	Faucet for Satellite
1	Guard for Faucet
1	Brew Cone, Universal
25	Paper Filters
1	Service Manual

GEM120P

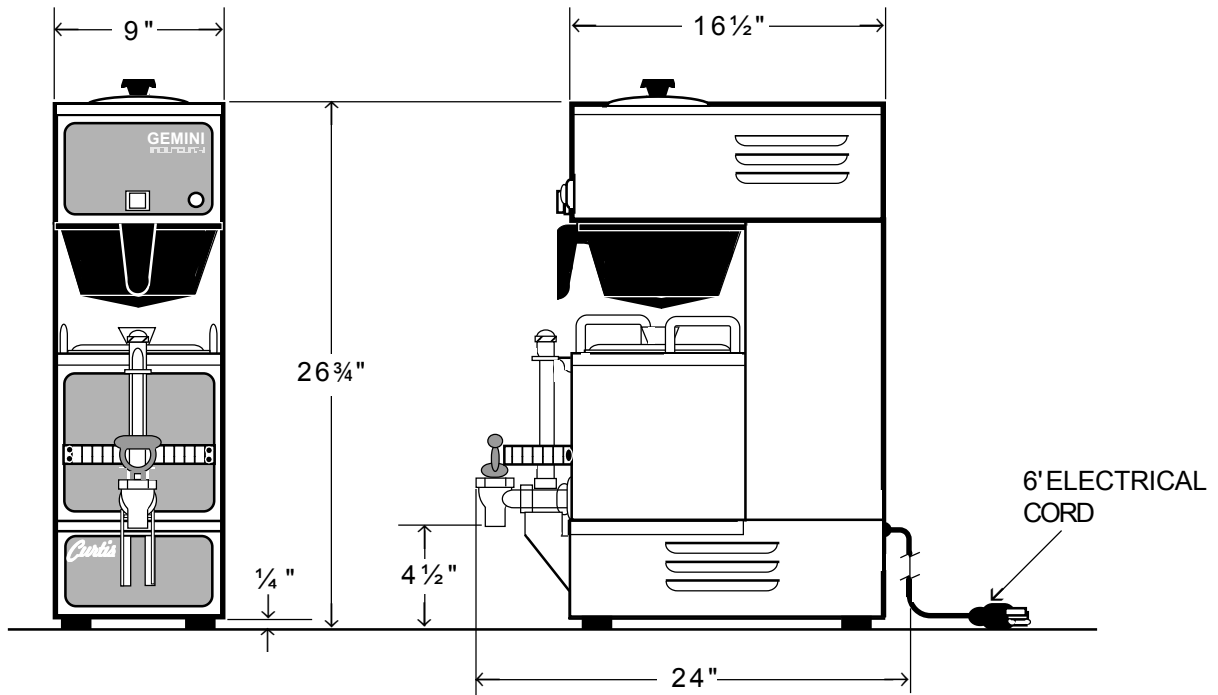


ISO 9001 REGISTERED  
WILBUR CURTIS COMPANY  
Montebello, CA 90640

FOR 120 VOLT OPERATION ONLY

FOR THE LATEST SPECIFICATIONS AND INFORMATION GO TO  
[WWW.WILBURCURTIS.COM](http://WWW.WILBURCURTIS.COM)

# ROUGH-IN DRAWING - GEMINI 120P



## S P E C I F I C A T I O N S

**Capacity:** 12 Cups.

**Finished Brew Capacity:** 36 Cups.

**Power Requirements:** 1700W - 14.2 Amps

**Electrical:** 120 VAC/60 Hz

**Height:** 28 inches

**Width:** 9 inches

**Depth:** 16 1/2 inches

**Shipping Weight:** Approximately 47lbs.

# THE GEMINI 120P

The Gemini 120P is not an automatic coffee brewer. To brew coffee, water must be poured into the machine by hand. Connecting a water line is not necessary.

## START UP

1. Carefully, unpack the shipping carton. Check for any damage.
2. Place an empty satellite, Gem-3, on the warmer deck.

**CAUTION** This brewer is shipped with the thermostat turned on. To prevent damage to the heating element, DO NOT plug in power cord until tank has been filled (step 3).

3. Pour water into the pour hole on top cover of the brewer. When water starts to come out of the sprayhead, this is an indication that the heating tank is full.\*
4. Plug cord into a 120 volt, 20 amp, electrical outlet. Switch on power at the toggle switch (item #31) behind the brewer.
5. Place a clean satellite on the warmer deck. Push the warmer switch (item #5) on to preheat the satellite. Make sure satellite is warmed up for at least 10 minutes prior to brewing. Failure to preheat the insulated satellite will result in an instant drop in coffee temperature.
6. The brew light (item 6) will come on about 15 to 20 minutes after plugging in the power cord. This indicates that the water in the heating tank is at brewing temperature (200° F).

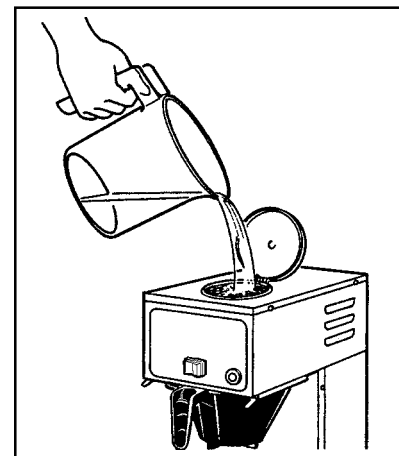


Figure 1. Filling Heating Tank

## BREWING COFFEE

1. Place a paper filter into the brew cone (item #1). Pour ground coffee into the filter.
2. Slide brew cone into the rails under the sprayhead.
3. Pour cold water through the pour hole on top of the brewer. As water goes into the pour hole, hot coffee will brew into the satellite. Do not pour more than 24 cups (one gallon max.) of water through the pour hole per brew.

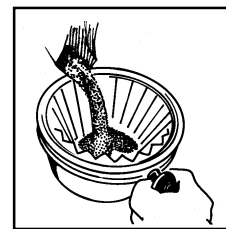


Figure 2. Fill brewcone

## BREWING DECAFFEINATED OR HIGH YIELD COFFEE

This Gemini 120P brewer comes equipped with the black plastic universal brew cone (Part No. WC-3621). To brew one gallon (24 cups) of high yield or decaffeinated coffee, the universal brew cone may overflow due to the flow characteristics of these types of ground coffee.

We recommend that you order the large capacity brew cone (Part No. WC-3313), with wire basket (Part No. WC-3314). To order paper filters for this brew cone ask for filter number Gem-6 (4" x 13").

---

\* IMPORTANT Water may be lost from the tank due to evaporation if the brewer is left for long periods of time without making coffee. When this occurs, refill the tank (step 2 above) before attempting to brew coffee.

## ***CARE AND MAINTENANCE***

Regular cleaning and preventive maintenance is essential to keep the Gemini 120P looking and working like new. By following these easy cleaning guidelines, you can assure years of quality coffee brewing service.

### ***CLEANING THE GEMINI 120P BREWER***

Using a daily routine of cleaning the external parts of the Gemini 120P brewing system should maintain its new appearance and insure that the flavor of the coffee is always good.

1. Wipe any spills, dust or debris from exterior surfaces.
2. Slide out brew cone. Rinse thoroughly with clean water.
3. Remove sprayhead and clean. Clean around dome area, wiping with nontoxic cleaner.
4. Clean brew cone rails with a damp cloth or brush. Dry thoroughly with clean cloth.

### ***PREVENTIVE MAINTENANCE***

1. Remove the sprayhead from brewer and clean it once a week; more often in heavy lime areas.
2. The inside of the heating tank may, occasionally, require the removal of lime buildup. The frequency will depend on local water conditions.

### ***CLEANING THE SATELLITE SERVER***

1. Clean the interior of the Satellite and lid daily after the last batch of coffee is used. Use a good nontoxic cleaner. You can also clean inside the satellite with a Scotch Brite® pad. Rinse thoroughly and dry.
2. Outside of the Satellite should be cleaned with stainless steel polish only, to prevent surface scratches.
3. The gauge glass should be cleaned. Disassemble by unscrewing the top fitting. Be sure to save the rubber washers for reassembly. Use a small brush to scrub inside the gauge glass (Curtis sells a brush for cleaning inside the glass, WC-3640).
4. Replace the gauge glass. Remember to replace the washers, top and bottom, or leaking will occur.
5. Disassemble the faucet by unscrewing the cap. Rinse and dry all parts. Check faucet seat cups and replace if cracked or leaking. Reassemble the faucet.

<p><b>IMPORTANT</b> When cleaning your Gemini System, do not use cleansers, liquid bleach, powders or any other substance that contains chlorine. These products promote corrosion and will pit the stainless steel. USE OF THESE PRODUCTS WILL VOID WARRANTY.</p>
--

## ***TroubleShooting***

ALL SERVICE PERFORMED ON THIS UNIT MUST BE DONE BY A QUALIFIED SERVICE TECHNICIAN.

**PROBLEM** Water in heating tank does not heat up at all.

### **SOLUTION**

1. Check the power supply. Make sure the power cord is properly connected and 120 volts are flowing to the outlet.
2. Check that the thermostat is turned on. Turn the stem clockwise until it stops.
3. Check the reset thermostat to see if the red button has popped out. There should be water in the heating tank. Fill with water then push in the red reset button.
4. Check for voltage at the heating element terminals. Voltmeter should read 110V to 120V. If there is no voltage reading at these terminals, the thermostat may be defective and not allowing current to flow to the element (a common occurrence if the unit has been allowed to run dry). Replace thermostat.
5. If the volt meter reads 110V to 120V at the heating element terminals, the thermostat is okay. Remove wires from heating element terminals and test them for continuity. You may use an ammeter if available. Clamp it on the black wire, from thermostat to heating element. This will indicate how much current, if any is flowing through the wire. If no continuity or low amp reading is indicated (under 15 amps), replace the heating element.

**PROBLEM** Brewed coffee cools down too fast.

### **SOLUTION**

1. Check warmer switch (item #5) by reading voltage at the terminals of warmer element. If there is no voltage reading when switch is pressed, then switch is faulty. Replace switch.
2. If there is voltage at the terminals of the warmer element (item #22) but the element still does not heat up, test element for continuity. If it is open (burned out), replace element.

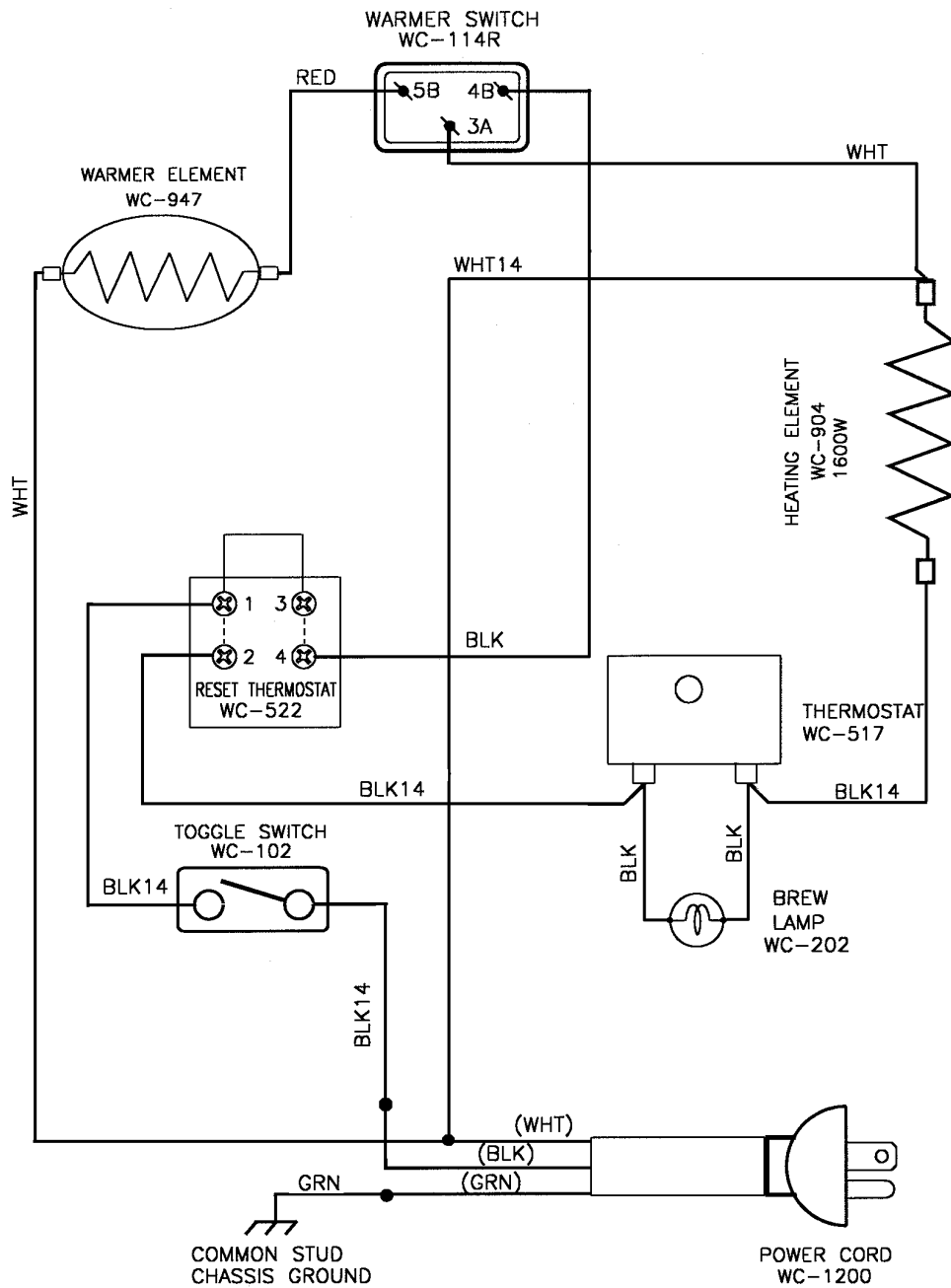
**PROBLEM** Poor spray pattern over coffee grounds. Coffee is not evenly saturated.

### **SOLUTION**

1. Check all the silicone water tubing for lime buildup and clean out.
2. Sometimes the silicone tubing gets kinked. Make sure the tubes are not too long where they might fold; or too short where they could be pinched off when the unit is closed up.
3. Look for an obstruction in the sprayhead fitting and clean if necessary.
4. The plastic sprayhead might be deformed or in need of cleaning. It is very difficult to tell if the tiny point in the center of the sprayhead is worn or is just slightly off-center. Replace the plastic sprayhead.

# WIRING DIAGRAM

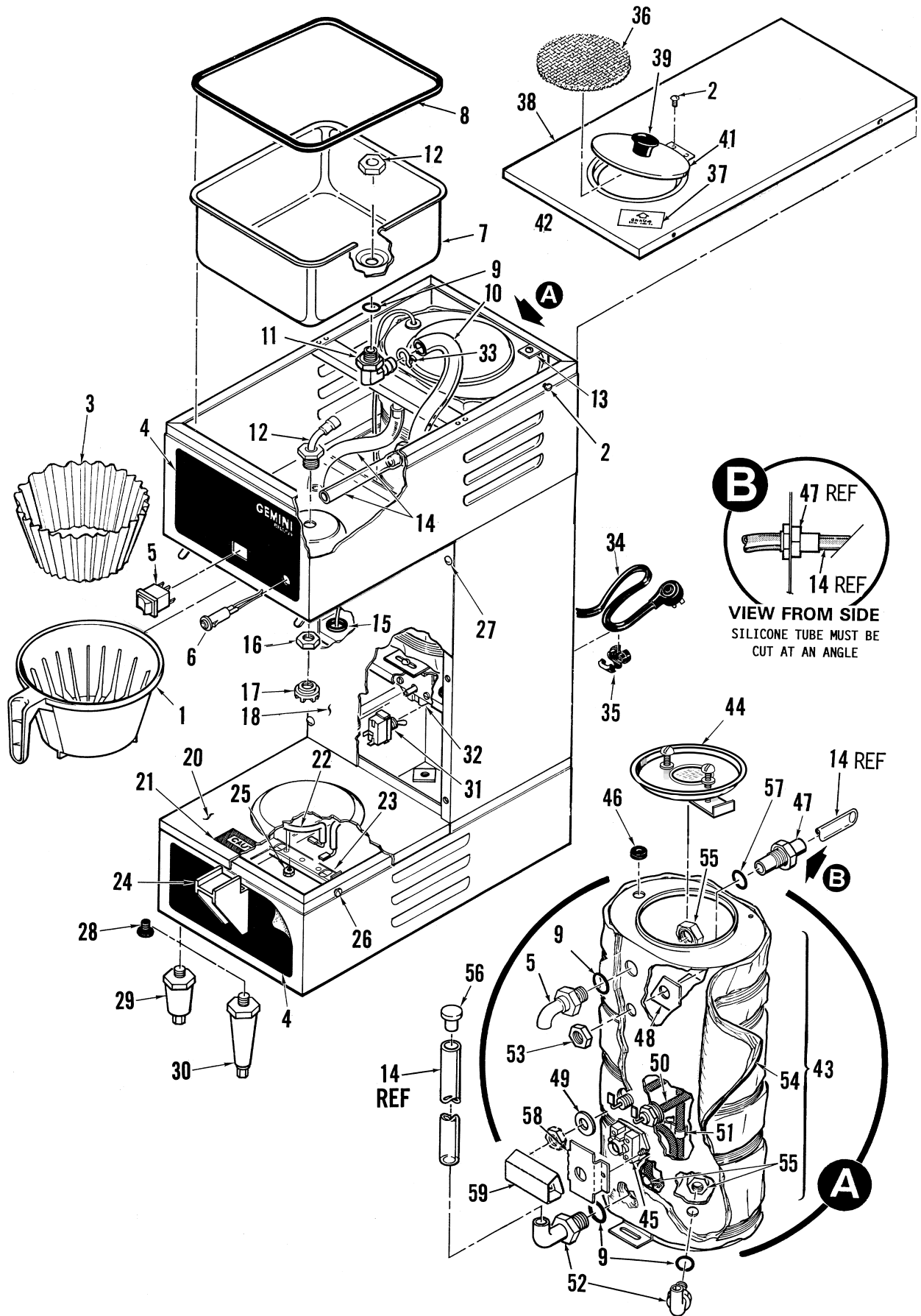
③	DIAGRAM NO.:	PART NO.:	WIRES:	CYCLE:	WATTAGE:	DRAWN BY:	CHECKED:	APPROVED:	EDR/EGN. NO.:	REV:
	WD-G120P-10	GEM-120P-10 1-STATION COFFEE BREWER	2+GND PHASE: 1	60 VOLTAGE: 120	1700 AMPERAGE: 14	EMDI DATE: 9/3/98	DATE:	DATE:	3140	C



- ③ USE THIS DIAGRAM FOR ALL OTHER MODELS WITH ADDED PREFIX LETTERS AND/OR DIFFERENT DASH NUMBER ON THEIR PART NUMBERS HAVING THE SAME ELECTRICAL RATINGS. Ex.: SCGEM-120P-10 or GEM-120P-12
- 2 DO NOT CHANGE NOR SUBSTITUTE WIRE COLORS.
- 1 ALL WIRES SHALL BE 18 AWG, 105°C PER UL STANDARDS.

NOTE: UNLESS OTHERWISE SPECIFIED

**ILLUSTRATED PARTS BREAKDOWN**  
**GEMINI 120P**



## ILLUSTRATED PARTS LIST - GEMINI 120P

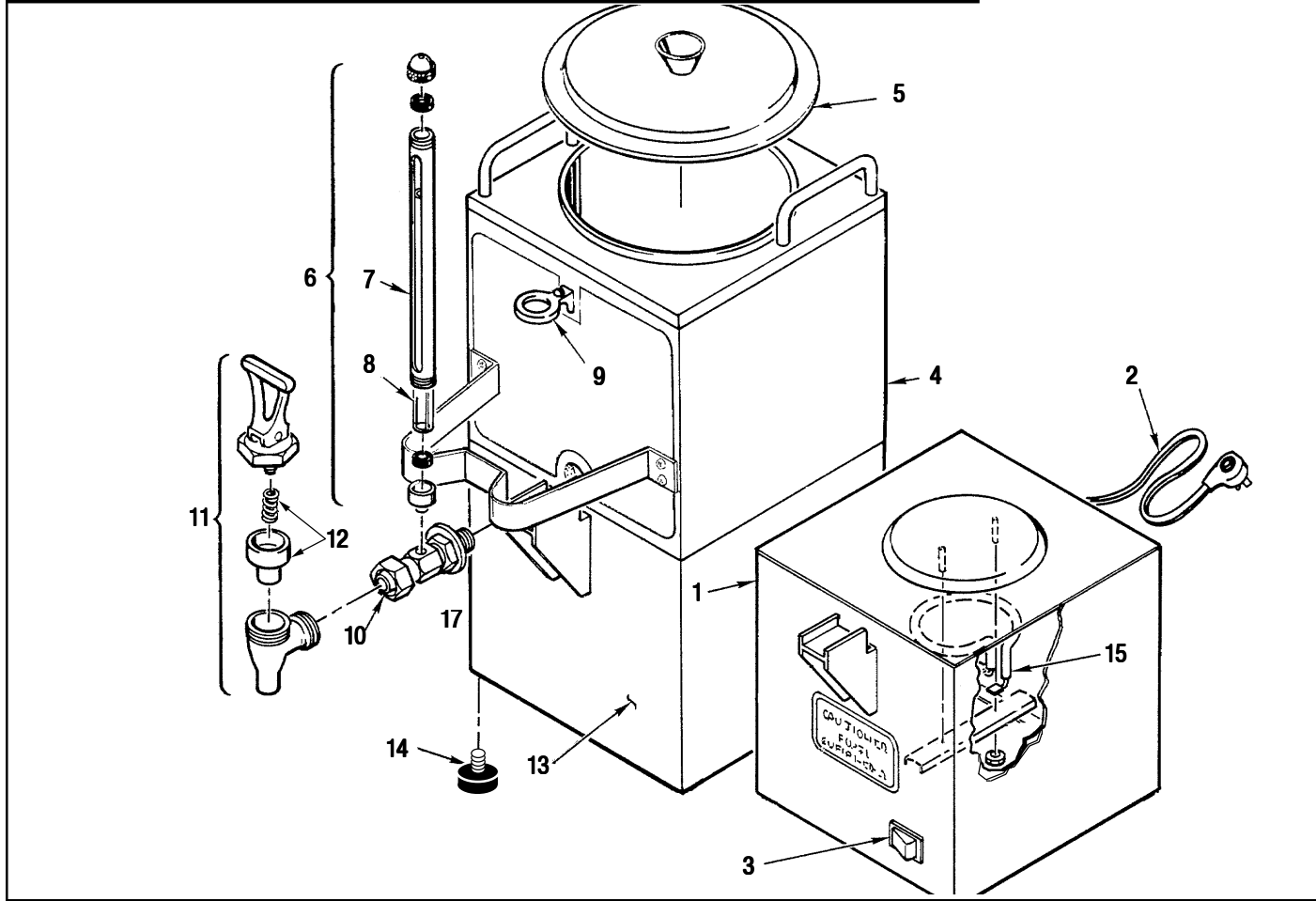
INDEX N°	PART N°	DESCRIPTION
1	WC-3621	BREW CONE, UNIVERSAL 7 1/8" BLK PLASTIC . . . . .
2	WC-4403	SCREW, 6-32x3/8 PHIL ROUND HD . . . . .
3	CR- 10	FILTER, COFFEE #506 PKG. OF 1000 . . . . .
4	WC-3922	LABEL, PANELS TOP & BOTTOM GEMINI 120P . . . . .
5	WC- 114R	SWITCH, ROCKER 120V RED . . . . .
6	WC- 202	LIGHT, BREW 115V . . . . .
7	WC-5470	POUR PAN GEMINI 120P . . . . .
8	WC-4211	NUT, 3/8" JAM NPT NICKEL PLATED. . . . .
9	WC-4320	O' RING 1/2" I.D. . . . .
10	WC-5350	TUBE, 1/2" I.D. x 130W SILICONE . . . . .
11	WC-2996	FITTING, POUR PAN GEM 120P . . . . .
12	WC-2940	FITTING, SPRAYHEAD ASSY . . . . .
13	WC-6301	BRACKET, UPPER TANK SUPPORT . . . . .
14	WC-5310	TUBE, 5/16" I.D. SILICONE GEN USE . . . . .
15	WC-1411	BUSHING, 5/8" SNAP-IN . . . . .
16	WC-4213	NUT, 5/8" LOCK BRASS . . . . .
17	WC-2906	SPRAYHEAD, BLUE .178 DIA . . . . .
18	WC-5452	COVER, FRONT . . . . .
20	WC-5451	DECK, WARMER ELEMENT . . . . .
21	WC-38310	LABEL, CAREFUL HOT SURFACE . . . . .
22	WC-37102	KIT, WARMER ELEMENT 100W 120V. . . . .
23	WC-6732	STRAP, WARMER ELEMENT . . . . .
24	WC-5424	BRACKET, FAUCET SUPPORT . . . . .
25	WC-4201	NUT, 8-32 HEX KEP ZINC . . . . .
26	WC-4439	SCREW, 6-32x1/4 PHIL PAN HD SS. . . . .
27	WC-4525	SCREW, 3/8-16x5/8 HEX BOLT, SS . . . . .
28	WC-3503	LEG, SCREW 3/8-16 STD BUMPER . . . . .
29	WC-3504	LEG, ADJUSTABLE 2 1/2 - 3 . . . . .
30	WC-3500	LEG, ADJUSTABLE 4" COUNTER . . . . .
31	WC- 102	SWITCH, TOGGLE SPST 25A 125/250 VAC RESISTIVE . . . . .
32	WC- 517	THERMOSTAT, CAPILLARY SPST 277V 22A GEN USE. . . . .
34	WC-1200	POWER CORD 6' 14/8 BLK SJTO . . . . .
35	WC-1408	GRIP, CORD 7/8" . . . . .
36	WC-5403	SCREEN POUR HOLE CR, GEM-120P . . . . .
37	WC-3801	LABEL, CAUTION WATER ONLY . . . . .
38	WC-5469	COVER, TOP GEM-120P . . . . .
39	WC-3238	KNOB, POUR OVER LID . . . . .
41	WC-5489	LID ASSY W/KNOB, POUROVERS . . . . .
43	WC-5468	TANK, COMPLETE GEM-120P . . . . .
44	WC-37008	KIT, TANK LID RETROFIT . . . . .
45	WC- 522	THERMOSTAT, RESET . . . . .
46	WC-4314	INSERT, SILICONE GROMMET . . . . .
47	WC-2959	FITTING, SYPHON TUBE BRASS . . . . .
48	WC-6210	SHIELD, BUBBLE . . . . .
49	WC-4306	WASHER, 9/16" TEFLON . . . . .
50	WC- 904	ELEMENT, HEATING ENVELOPE . . . . .
51	WC-5409	CLIP, HEATING ELEMENT/CAPILLARY . . . . .
52	WC-2951	FITTING, TANK WATER INLET NICKEL PLATED . . . . .



# ILLUSTRATED PARTS LIST - GEMINI 120P

INDEX N°	PART N°	DESCRIPTION
53	WC-4243	NUT, 3/4-16 LOCK BRASS . . . . .
54	WC-3686	INSULATION WRAP GEM-120P . . . . .
55	WC-4212	NUT, 5/8" JAM NPT BRASS . . . . .
56	WC-43058	PLUG, DRAIN PP RED . . . . .
57	WC-4373	O' RING, 3/4" I.D. x 15/16" O.D. 3/32 . . . . .
58	WC-43055	GUARD, SHOCK RESET THERMOSTAT . . . . .
59	WC-4394	GUARD, SHOCK HEATING ELEMENT . . . . .

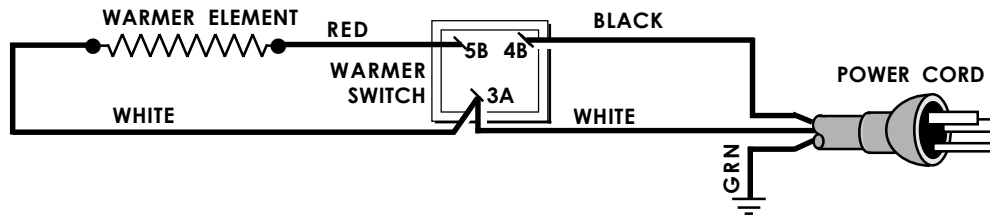
## ILLUSTRATED PARTS BREAKDOWN GEM-3, -5, -8



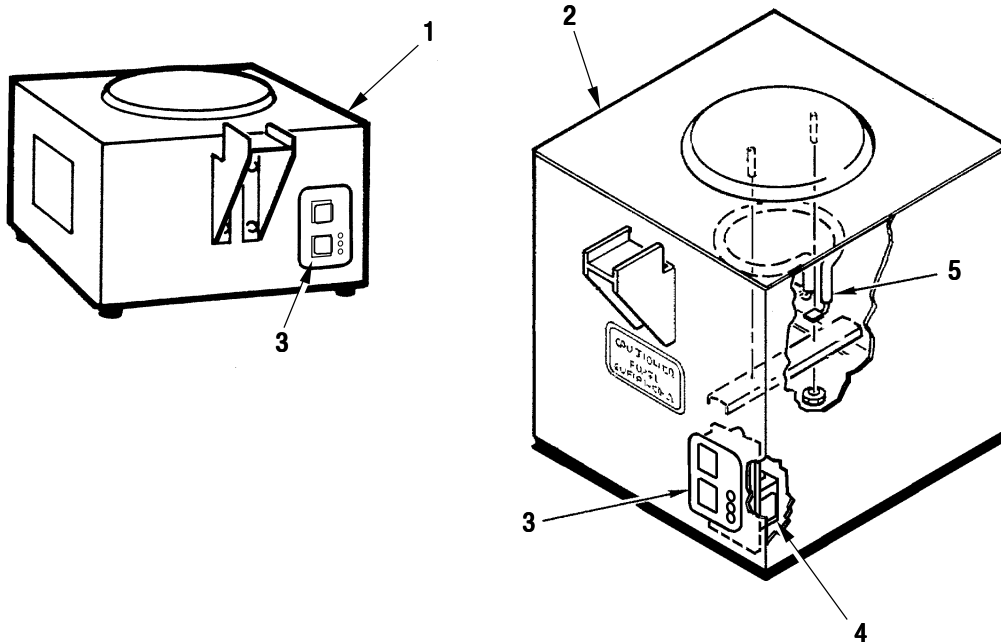
INDEX N°	PART N°	DESCRIPTION
1	GEM-5	SATELLITE WARMER STAND, 115V . . . . .
2	WC-1201	POWER CORD 6' 18/3 BLK . . . . .
3	WC- 114R	SWITCH, ROCKER 120V RED . . . . .
4	GEM 3	SATELLITE SERVER 1½ GAL . . . . .
5	WC-3307	LID GEMINI SATELLITE . . . . .
5A	WC-5622	LID, SATELLITE PLASTIC GEM3 (OPTIONAL)
6	WC-2102	GAUGE GLASS ASSEMBLY, 8" C . . . . .
7	WC-2010C	SHIELD, 8 INCH GAUGE GLASS . . . . .
8	WC-2025	GAUGE GLASS, 8 INCH . . . . .

INDEX N°	PART N°	DESCRIPTION
9	WC-2007	BRACKET, GAUGE GLASS FORMED . . . . .
10	WC-1901	SHANK, FAUCET D&T CHROME . . . . .
11	WC-1800	FAUCET S' NONLOCKING . . . . .
11A	WC-1841	FAUCET, "ESP" BLACK NONLOCKING (OPTIONAL)
12	WC-3705	KIT FAUCET S' SERIES . . . . .
13	GEM 4	SATELLITE STAND . . . . .
14	WC-3503	LEG, SCREW BUMPER 3/8"-16 STD . . . . .
15	WC-37102	KIT, WARMER ELEMENT 100W 120VAC . . . . .

## Wiring Diagram Gem -5 & -8 120 Volts, 90 Watts



## GEM-5D & 8D Parts List



INDEX N°	PART N°	DESCRIPTION
1	GEM-8D	SATELLITE WARMER STAND, DIGITAL <b>SHORT</b> 120V . . . . .
2	GEM-5D	SATELLITE WARMER STAND, DIGITAL <b>TALL</b> 120V . . . . .
3	WC-39223	MEMBRANE CONTROL PANEL, GEM-5D & -8D . . . . .
4	WC-567	CONTROL BOARD GEM-5D & -8D . . . . .
5	WC-37102	KIT, HEATER ELEMENT 100W 120V . . . . .

MODEL N° **GEMINI 120P** - \_\_\_\_\_

SERIAL N° \_\_\_\_\_

DATE OF PURCHASE \_\_\_\_\_

DATE OF INSTALLATION \_\_\_\_\_

VOLTAGE \_\_\_\_\_

NOTES \_\_\_\_\_

\_\_\_\_\_

\_\_\_\_\_

\_\_\_\_\_

\_\_\_\_\_

\_\_\_\_\_

\_\_\_\_\_

\_\_\_\_\_

\_\_\_\_\_

\_\_\_\_\_

\_\_\_\_\_

\_\_\_\_\_

\_\_\_\_\_

## WARRANTY

We hereby certify that the products manufactured by the Wilbur Curtis Company, Inc., are, to the best of our knowledge, free from all defects and faulty workmanship.

The following warranties and conditions are applicable:

1. **1 Year Parts & Labor from Date of Purchase from Factory:** This warranty covers all electrical parts, fittings and tubing.
2. **40 Months or 40, 000 Pounds of Coffee on a set of Grinding Burrs. (ADS Grinders)**
3. **3 Years from Date of Purchase:** This warranty covers electronic control boards and leaking or pitting of a stainless steel body of a Brewer or Urn.
4. **90 Days from Date of Purchase:** On replacement parts that have been installed on out of warranty equipment

All in-warranty service calls must have prior authorization from the manufacturer. For an RMA (Return Merchandise Authorization) number, call the Technical Service Department at 1-800-995-0417. The Wilbur Curtis Company will allow up to 100 miles, round trip, per in-warranty service call.

### CONDITIONS & EXCEPTIONS

The warranty covers original equipment at time of purchase only. The Wilbur Curtis Company, Inc., assumes no responsibility for substitute replacement parts installed on Curtis equipment that have not been purchased from the Wilbur Curtis Company, Inc. The Wilbur Curtis Company will not accept any responsibility if the following conditions are not met. The warranty does not cover and is void under these circumstances:

- 1) **Improper operation of equipment. The equipment must be used for its designed and intended purpose and function.**
- 2) **Improper installation of equipment. This equipment must be installed by a professional, certified technician and must comply with all local electrical, mechanical and plumbing codes.**
- 3) **Wilbur Curtis Company will not be responsible for the operation of equipment at other than the stated voltages on the serial plate.**
- 4) **Abuse or neglect (including failure to periodically clean or remove lime accumulations). Manufacturer is not responsible for variation in equipment operation due to excessive lime or local water conditions.**
- 5) **Replacement of items subject to normal use and wear. This shall include, but is not limited to, light bulbs, shear disks, "O" rings, gaskets, canister assemblies, whipper chambers and plates, mixing bowls, agitation assemblies and whipper propellers.**
- 6) **Any faults resulting from inadequate water supply. This includes, but is not limited to, excessive or low water pressure, and inadequate or fluctuating water flow rate.**
- 7) **All repairs and/or replacements are subject to our decision that the workmanship or parts were faulty and the defects showed up under normal use.**
- 8) **All labor shall be performed during regular working hours. Overtime charges are the responsibility of the owner.**
- 9) **Charges incurred by delays, waiting time, or operating restrictions that hinder the service technician's ability to perform service is the responsibility of the owner of the equipment. This includes institutional and correctional facilities.**
- 10) **All claims under this warranty must be submitted to the Wilbur Curtis Company Technical Service Department before return of the unit to the factory.**
- 11) **All equipment returned to us must be repackaged properly in the original carton. No units will be accepted if they are damaged in transit due to improper packaging.**
- 12) **Damaged in transit.**
- 13) **The resetting of safety thermostats and circuit breakers, programming and temperature adjustments are the responsibility of the equipment owner.**

**NO UNITS OR PARTS WILL BE ACCEPTED WITHOUT A RETURN MERCHANDISE AUTHORIZATION (RMA). RMA NUMBER MUST BE MARKED ON THE CARTON OR SHIPPING LABEL.**

All in-warranty service calls must be performed by an authorized service center, where service is available. Call the factory for location near you.



#### WILBUR CURTIS CO., INC.

6913 Acco St., Montebello, CA 90640-5403 USA

Phone: 800/421-6150 ♦ Fax: 323-837-2410

♦ Technical Support Phone: 800/995-0417 (M-F 5:30A - 4:00P PST) ♦ E-Mail: [techsupport@wilburcurtis.com](mailto:techsupport@wilburcurtis.com)  
♦ Web Site: [www.wilburcurtis.com](http://www.wilburcurtis.com)

Printed in U.S.A. 8/20/03 F - 1904 rev A

**FOR THE LATEST SPECIFICATION INFORMATION GO TO [WWW.WILBURCURTIS.COM](http://WWW.WILBURCURTIS.COM)**